

PRESENTATION

WHO WE ARE AND WHAT WE DO

Geo Studio Engineering S.r.l.

SEDE LEGALE

VIA LASTRE, 3/A - 37121 VERONA
C. F. e P.I. 03982990233
info@geo-studio.it

SEDE OPERATIVA DI BOVOLONE (VR)
VIA DON C. GNOCCHI, 5 - 37051 BOVOLONE (VR)
TELEFONO: 045.7101045 - FAX: 045.6902592

SEDE OPERATIVA DI PARMA
VIA EMILIA OVEST, 42/C - 43126 PARMA
TELEFONO: 0521.774646 - FAX: 0521.775267

info@geo-studio.it

www.geo-studio.it

Geo
studio
engineering



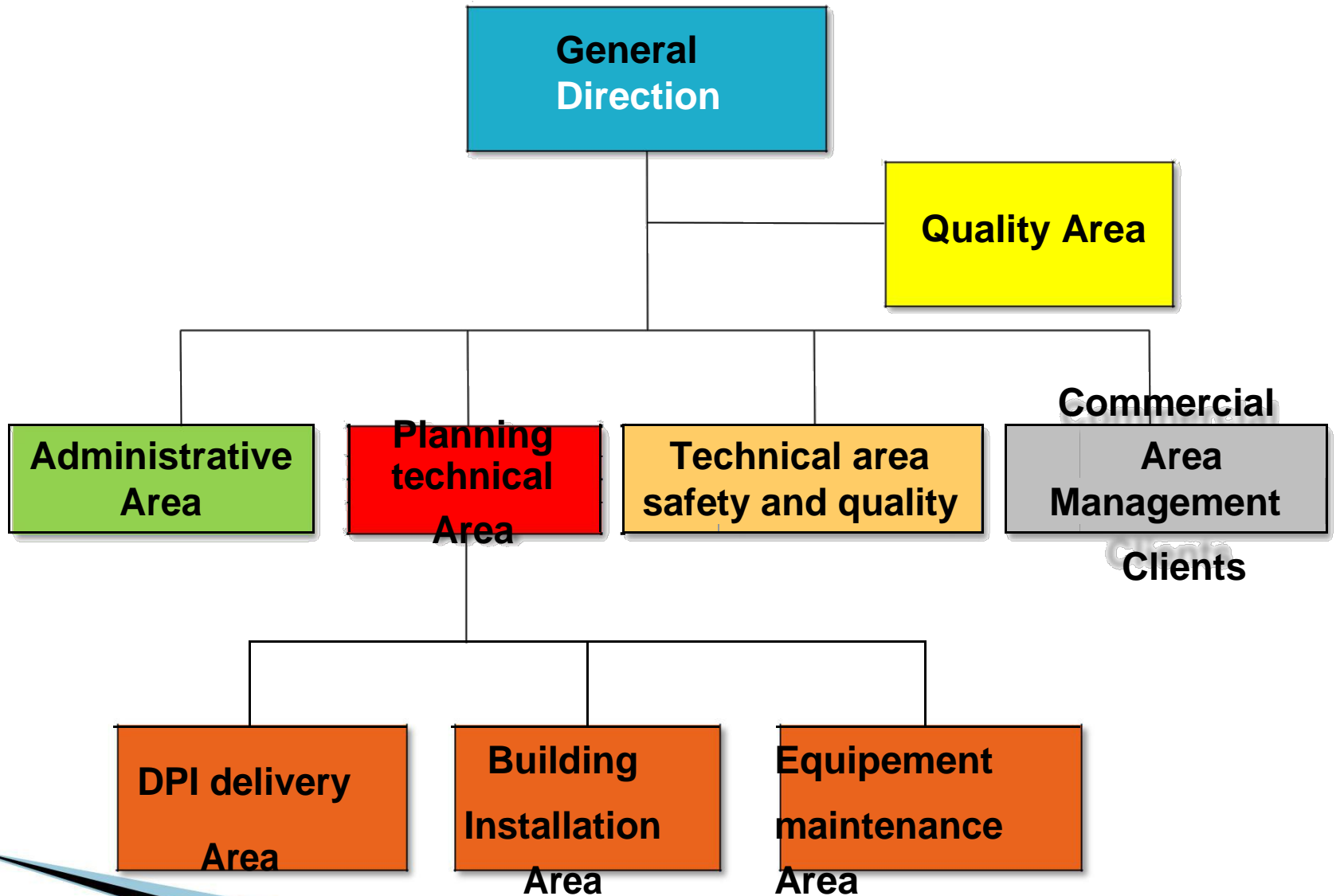
Management System
ISO 9001:2008



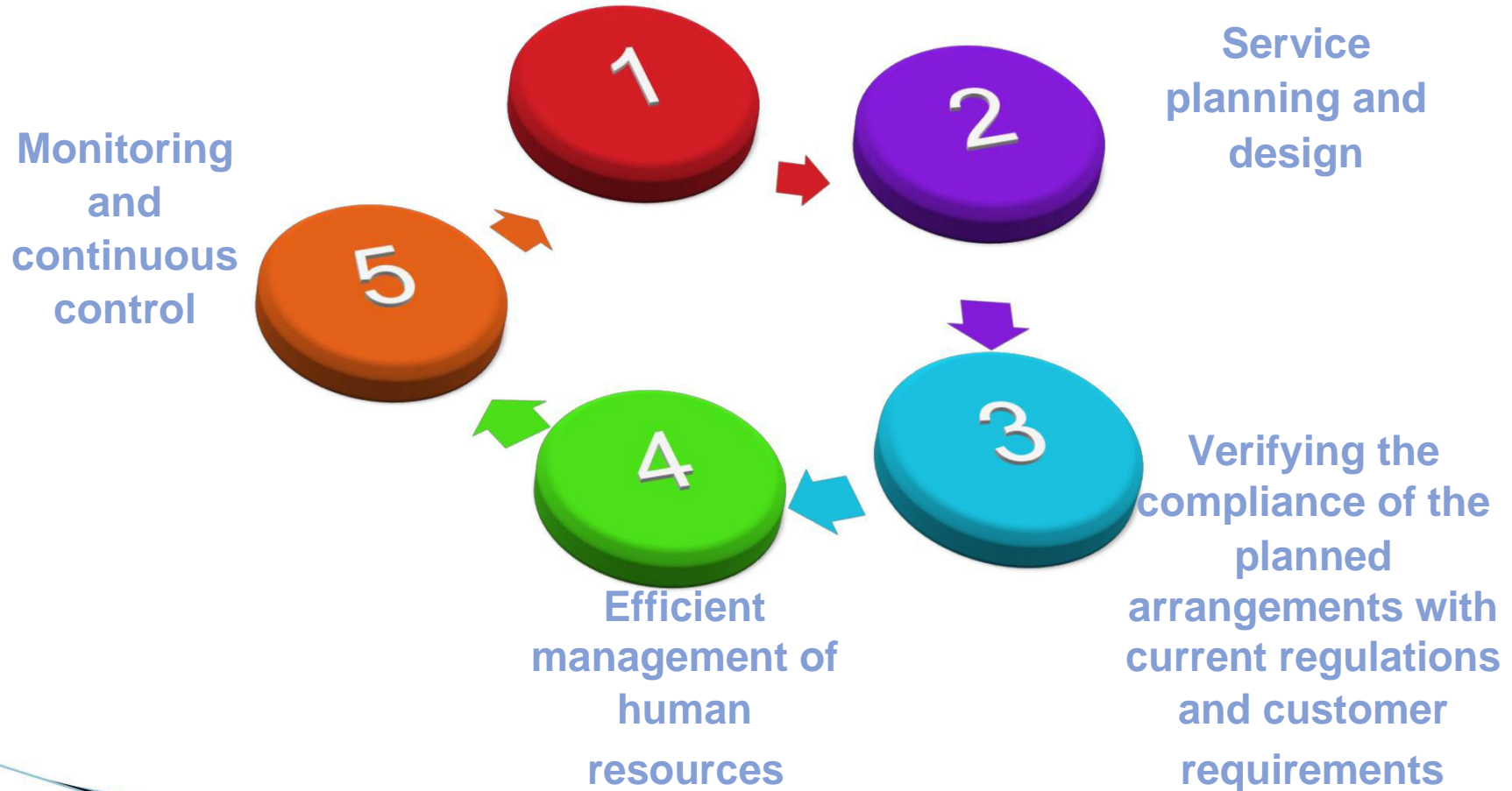
www.tuv.com
ID: 9105079621

Geo Studio is a service company that operates throughout the Italian territory since 1990, establishing itself in the Northeast for the range of services offered to small, medium and large businesses, corporations, schools and banks and Public Institutions.

The company has always played an intense activity of assistance and advice to businesses, thanks to a structure made up of professionals and skilled technicians with specific knowledge, professionalism, commitment and experience.



Problems
analysis



SERVICE LINES



Design, realization and
maintenance of
technological systems



Hygiene and safety
at the workplaces



Fire prevention



Management
systems



Occupational
medicine



Environment
and food
hygiene



Personal protective
equipment

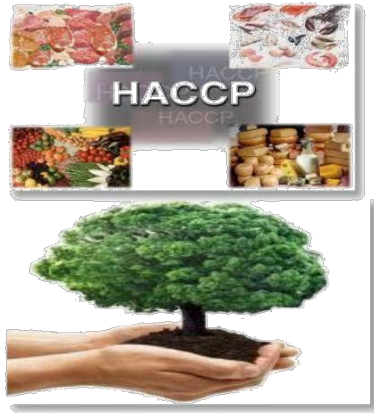


Training



Design, realization and maintenance of technological systems

- Biomethane plants;
- biogas plants;
- Electrical systems;
- Mechanical plants;
- Thermal plants;
- Conditioning systems;
- Photovoltaic systems;
- Wind farms;
- Energy certification of buildings;



Environment and food hygiene



Management systems



Occupational medicine



Training



Safety at the workplace



Fire prevention system design

Premises

Our company is developing authorizations for the construction of biomethane plants, which are today the most efficient plants in renewable energy after photovoltaic and hydroelectric plants.

The following, briefly describe the system and its characteristics :

Description biomethane plant.



These systems have the need for an agricultural/industrial/artisan area of the variable total surface, based on the power of the plant, by 25.000sm to 35.000sm with the possibility of direct access.

Arrays that use such facilities are:

- # Livestock waste;
- # MSW - organic fraction dry urban refusal;
- # Agricultural sub-products listed in table 1A of DM 6/7/2012;

The refined biogas is called biomethane

The comparison between the chemical composition and the calorific values of natural gas and biomethane, shows that the latter has very similar characteristics to those of the natural gas that we normally use in domestic and industrial installations.

In Europe (France, Germany, Switzerland, Austria, Sweden and The Netherlands), the grid feed biomethane and its use as transport fuel is an established practice.

These countries have established technical standards on chemical and physical properties that the biomethane must meet to be placed on the network, with security for systems and users.

Biomethane Decree DM 12/05/2013



And Italy, it is adequate for regulating the production of biomethane, with the issuance of the MD 05/12/2013 in implementation of Legislative Decree n° 28/2011 transposing Directive 2009/28/EC and with Resolution Authority for Electricity, Gas and Water System of 02/12/2015 n° 46/2015/R/Gas has been regulated technical standards which apply to the operators of transport networks and the costs of connecting to the same.

Access to the SNAM network

The method claims of new delivery points to biomethane production is defined by the Network Code of SNAM Rete Gas, approved by resolution 75/03 by the Authority for Electricity, Gas and W.S. of 28 April 2016.

Geo Studio Engineering

Engineering company develops and designs authorization for the construction of biomethane plants that use matrices as MSW (Organic fraction of dry urban refusal) and agriculture sub-products listed in Table 1A of MD 6/7/12

.

Geo Studio Engineering

Engineering Company is currently developing and planning permissions for the construction of biomethane plants in the Regions:

- ❖ Sicily
- ❖ Lazio
- ❖ Lombardia
- ❖ Piemonte
- ❖ Marche
- ❖ Emilia Romagna

Biomethane Plant of imminent construction









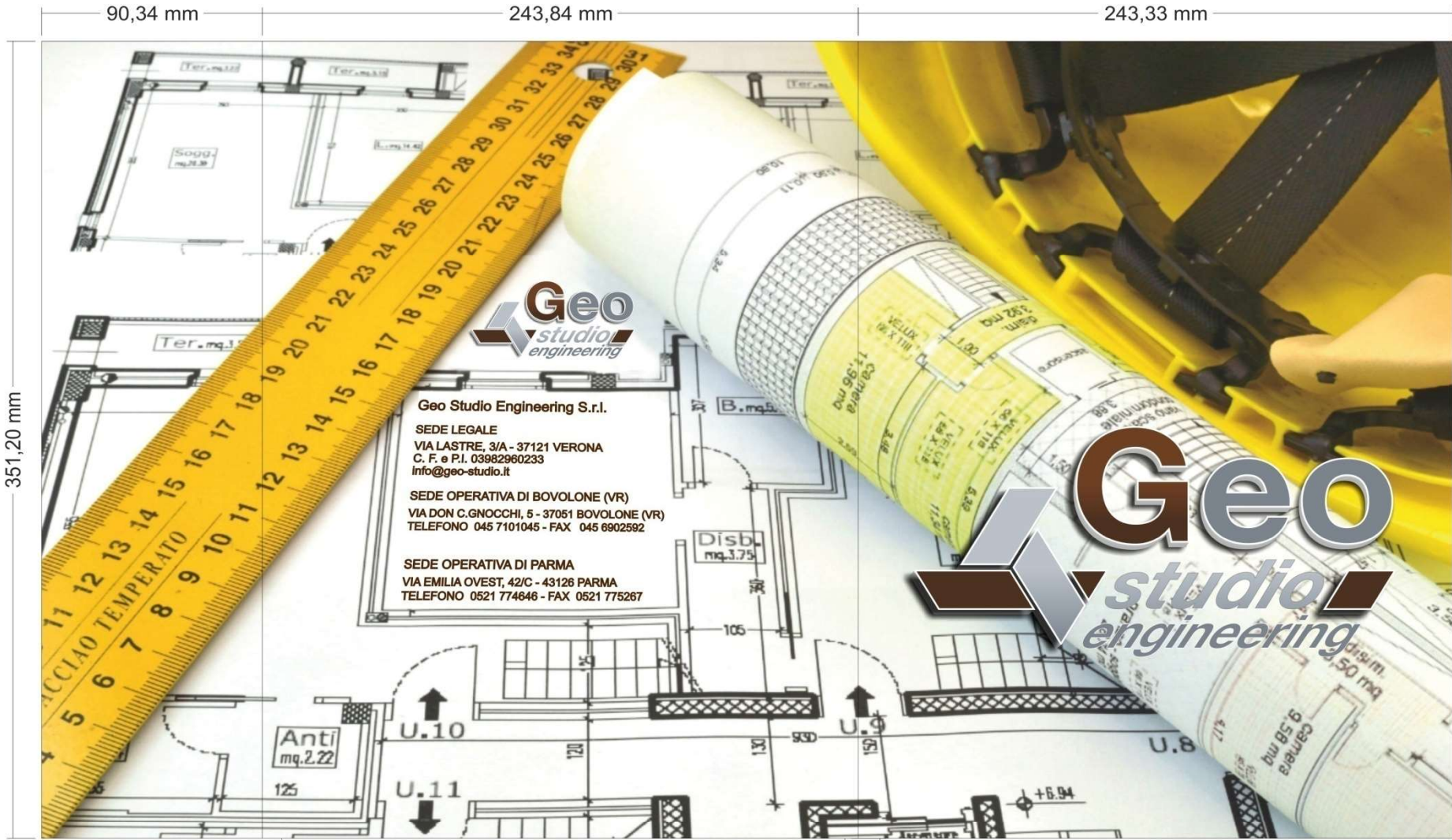
Geo Studio Proposal

- Development and production of a biomethane plant Authorization of variable power from 250 to 500 Ncm/h including the practice of Screening Environmental Impact Assessment and Environmental Integrated Authorization.

The project includes :



- Contract availability of previously verified and deemed suitable ground excluding constraints, with contract in Right of Surface or Purchase;
- Contracts for the supply of matrices;
- Contracts for the sale of digestate;
- Assistance in European loans obtaining for the construction of plant compatible with GSE Incentives.



90,34 mm

243,84 mm

243,33 mm

351,20 mm



Geo Studio Engineering S.r.l.
SEDE LEGALE
VIA LASTRE, 3/A - 37121 VERONA
C. F. e P.I. 03982960233
info@geo-studio.it
SEDE OPERATIVA DI BOVOLONE (VR)
VIA DON C. GNOCCHI, 5 - 37051 BOVOLONE (VR)
TELEFONO 045 7101045 - FAX 045 6902592
SEDE OPERATIVA DI PARMA
VIA EMILIA OVEST, 42/C - 43126 PARMA
TELEFONO 0521 774646 - FAX 0521 775267



Sede Direzionale
Via Don Carlo Gnocchi,5
37051 - Bovolone (VR)
045.7101045 - Fax 045.6902592

www.geo-studio.it
info@geo-studio.it

102,36 mm

230,55 mm