



TRATTORE T6 BioMetano

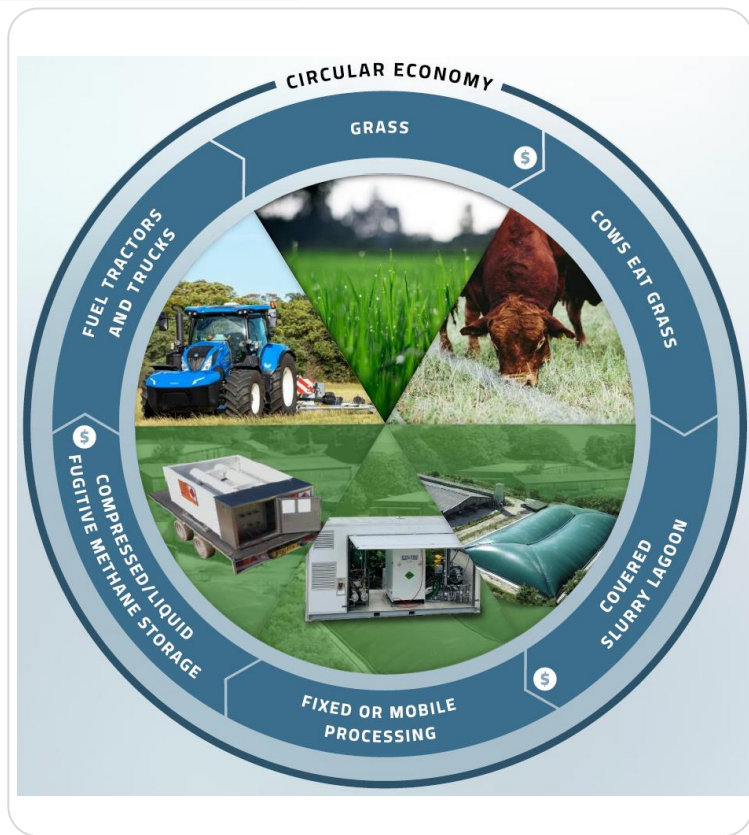
**ELEMENTO IMPRESCINDIBILE DELL'AZIENDA AGRICOLA
ENERGETICAMENTE INDIPENDENTE E SOSTENIBILE**

Le informazioni qui contenute possono contenere analisi non verificate. Sono stati compiuti tutti gli sforzi per fornire dati e specifiche tecniche aggiornate alla data di stesura del documento, nella piena consapevolezza che detti dati possono cambiare senza preavviso .

The information contained herein may contain unverified analysis and facts observed. Effort has been made to provide reliable results and has been made to use the latest available specifications and other materials in the full understanding that these are subject to change without notice.

MODELLO SOSTENIBILE: "ENERGY INDEPENDENT FARM"

L'AZIENDA AGRICOLA DIVERSIFICATA



COSTI:

- 1) CERTEZZA DEL COSTO
- 2) COMUNITÀ ENERGETICA



BUSINESS:

- 1) FILIERE A NEUTRALITA' CARBONICA
- 2) CONSUMATORI SOSTENIBILI
- 3) CERTIFICATI CO2



NEW HOLLAND T6.180 METHANE POWER

ALTERNATIVE PROPULSION LEADER

We start from a **leadership position** in alternative fuels & electrification

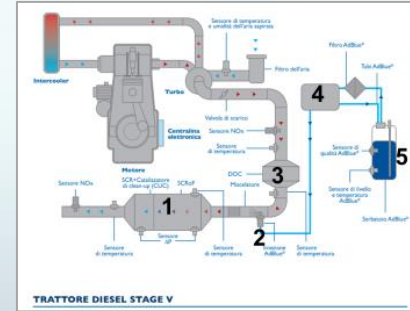
**WORLD'S 1ST
BIO-METHANE TRACTOR**

80%
less pollutants

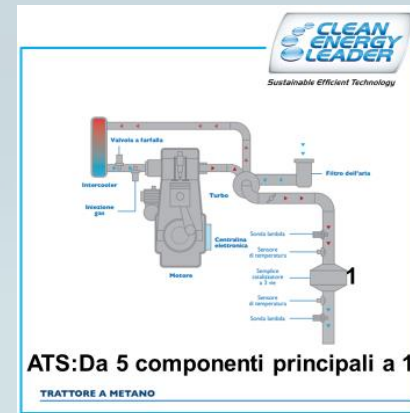
30%
lower operating costs

50%
noise reduction

**Net zero
impact**



TRATTORE DIESEL STAGE V



ATS: Da 5 componenti principali a 1

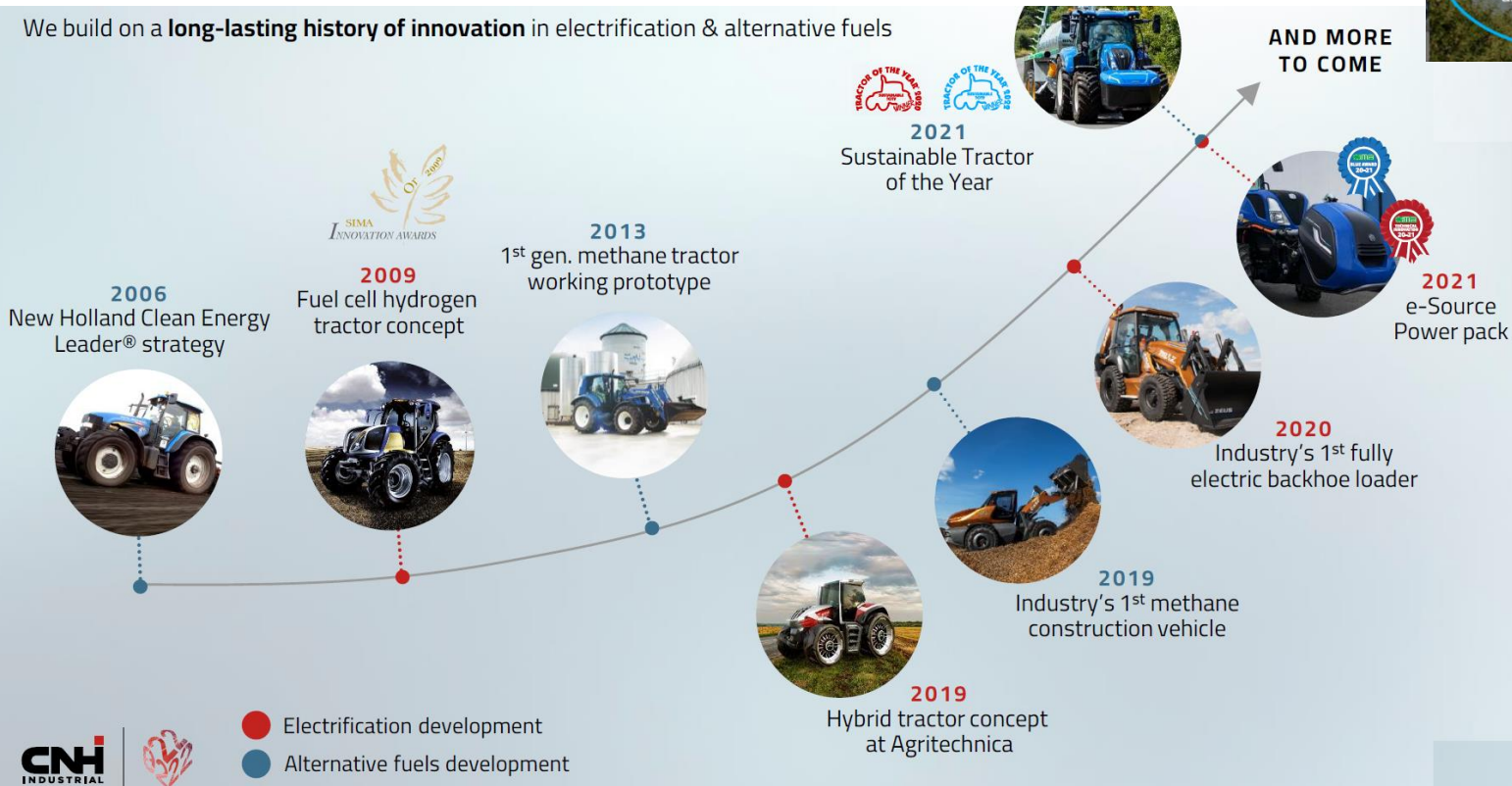
TRATTORE A METANO



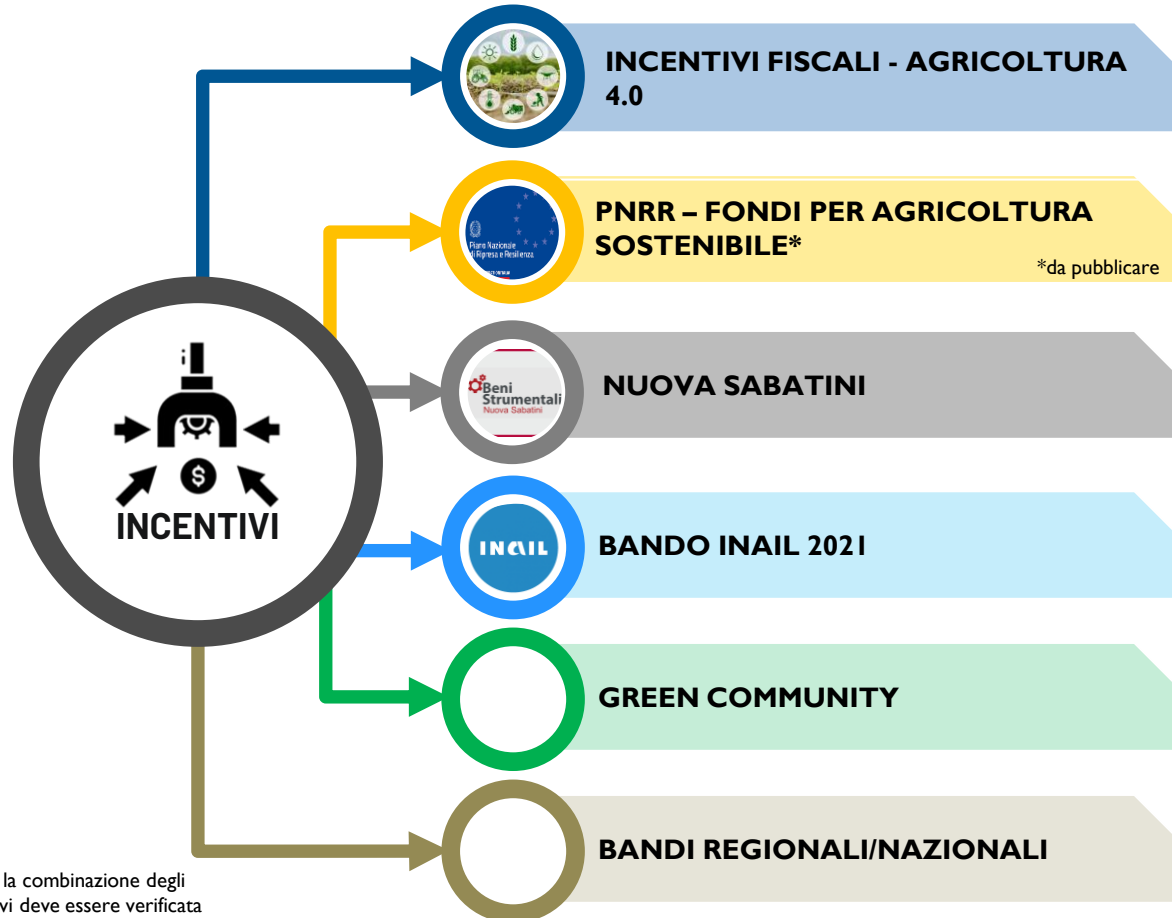
STRATEGIA CNH INDUSTRIAL

A RUNNING START

We build on a **long-lasting history of innovation** in electrification & alternative fuels



INCENTIVI



Nota: la combinazione degli incentivi deve essere verificata



GRAZIE