



# ECONOMIA CIRCOLARE IN AGRICOLTURA

## TRATTORE A COMBUSTIBILI ALTERNATIVI: ELEMENTO CHIAVE DELL'ECONOMIA CIRCOLARE

*Le informazioni qui contenute possono contenere analisi non verificate. Sono stati compiuti tutti gli sforzi per fornire dati e specifiche tecniche aggiornate alla data di stesura del documento, nella piena consapevolezza che detti dati possono cambiare senza preavviso.*

*The information contained herein may contain unverified analysis and facts observed. Effort has been made to provide reliable results and has been made to use the latest available specifications and other materials in the full understanding that these are subject to change without notice.*

# MODELLO SOSTENIBILE: "ENERGY INDEPENDENT FARM"

L'AZIENDA AGRICOLA IN ECONOMIA CIRCOLARE



## COSTI:

- 1) CERTEZZA DEL COSTO
- 2) COMUNITÀ ENERGETICA



## BUSINESS:

- 1) FILIERE A NEUTRALITA' CARBONICA
- 2) CONSUMATORI SOSTENIBILI
- 3) CERTIFICATI CO2



# "ENERGY INDEPENDENT FARM"

DIVERSIFICAZIONE GRAZIE L'AGRENERGETICO

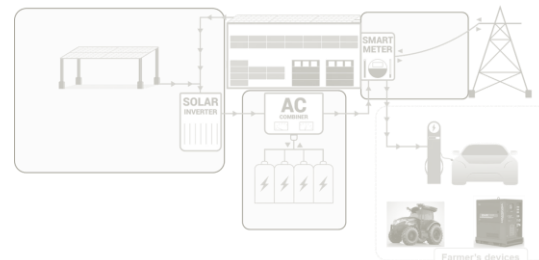
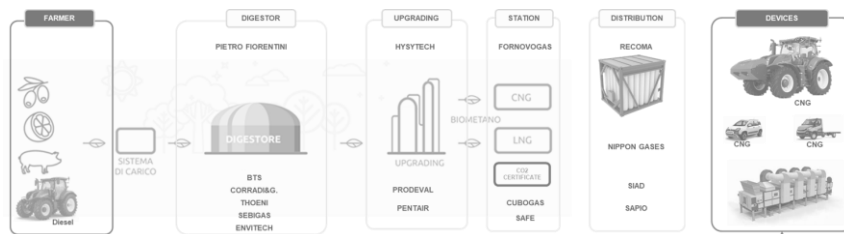
## BIOMASSA



## AGRIVOLTAICO

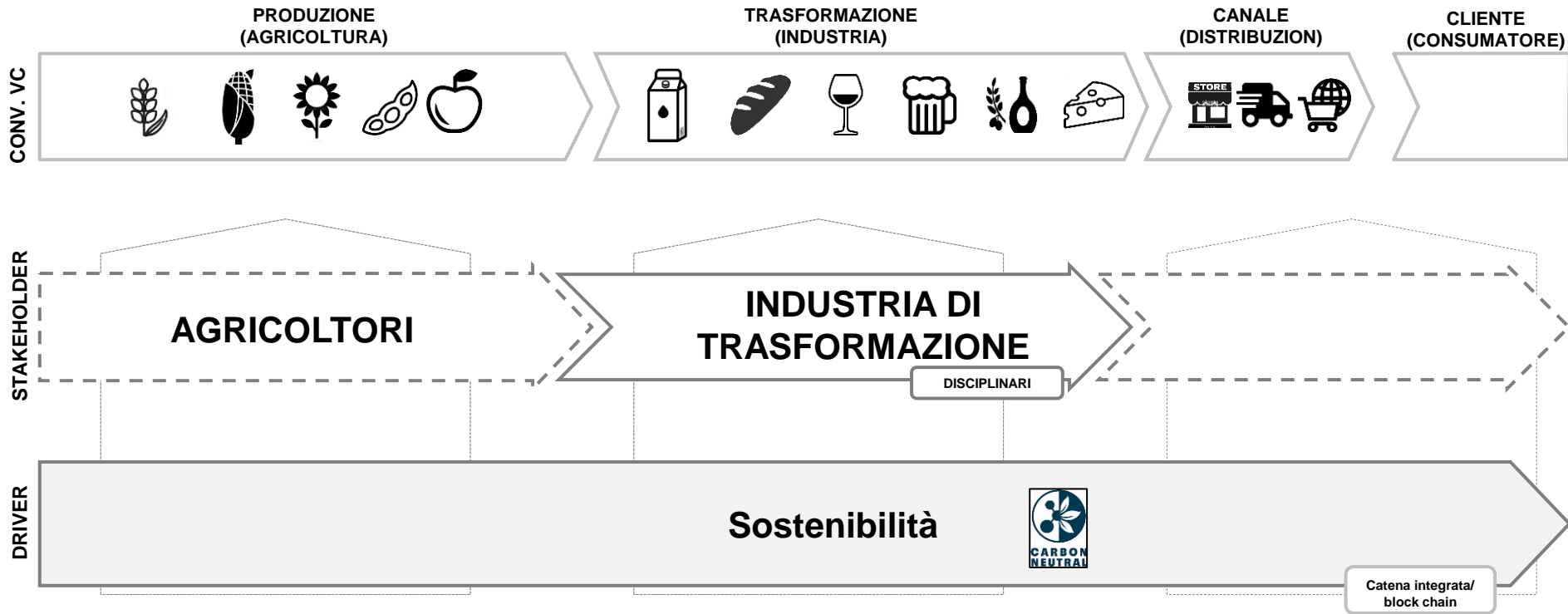


SUPPLY CHAIN



# FILIERA AGROINDUSTRIALE

## SOSTENIBILE (NETRALITA' CARBONICA)



# NEW HOLLAND T6.180 METHANE POWER

## LEADER NEI COMBUSTIBILI ALTERNATIVI

We start from a **leadership position** in alternative fuels & electrification

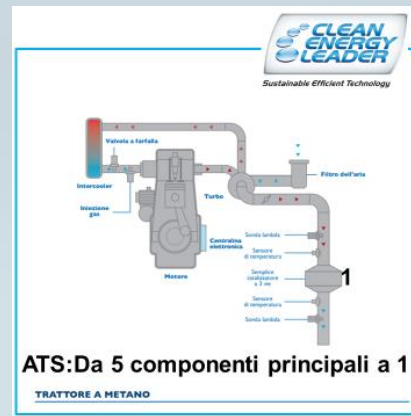
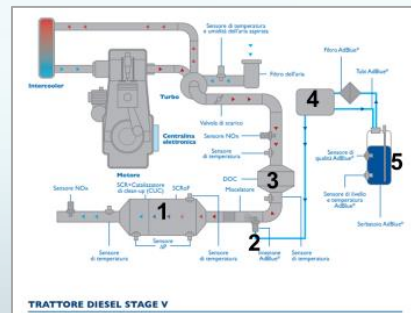
### WORLD'S 1<sup>ST</sup> BIO-METHANE TRACTOR

**80%**  
less pollutants

**30%**  
lower operating costs

**50%**  
noise reduction

**Net zero**  
impact

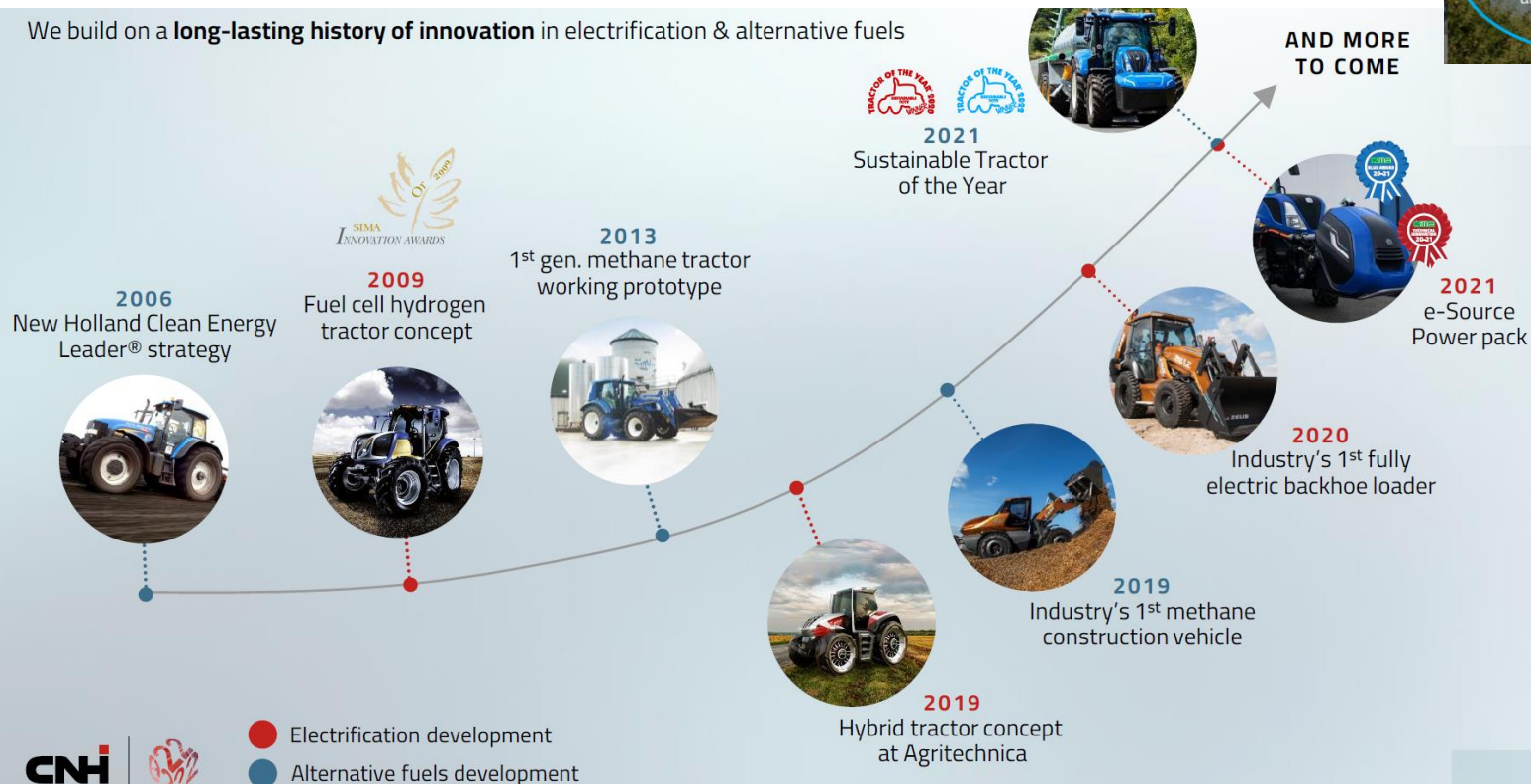




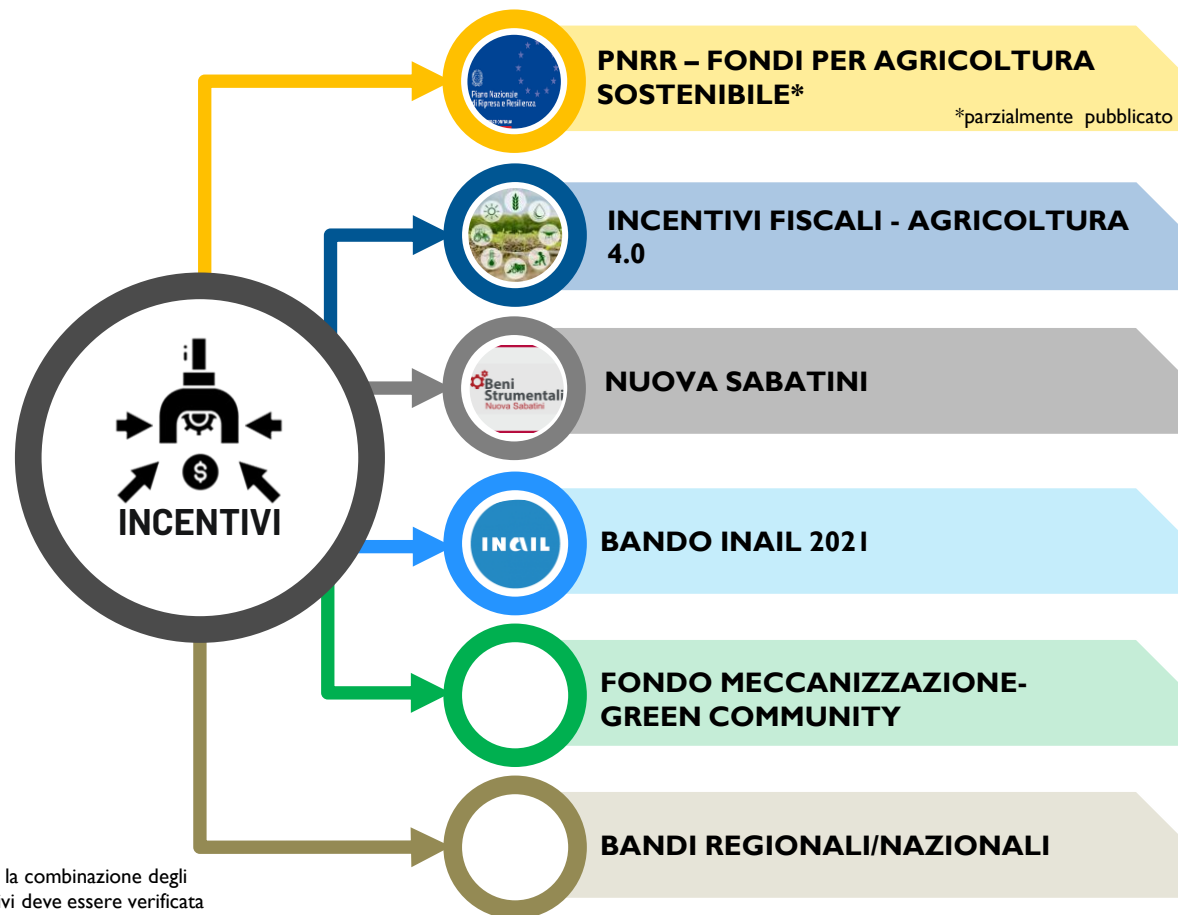
# STRATEGIA CNH INDUSTRIAL

## A RUNNING START

We build on a **long-lasting history of innovation** in electrification & alternative fuels



# INCENTIVI



**Nota:** la combinazione degli incentivi deve essere verificata



GRAZIE