



INDEX

WELCOME IN WRS

MACHINES WITH OUTPUT SIZE CONTROL

TM3711E	8
SE15E2	10
SE30E2	12

ELECTRIC MACHINES

SE4	16
SE10	18
SE15	20
SE30	22

HYDRAULIC MACHINES

SH50	26
SH100	28

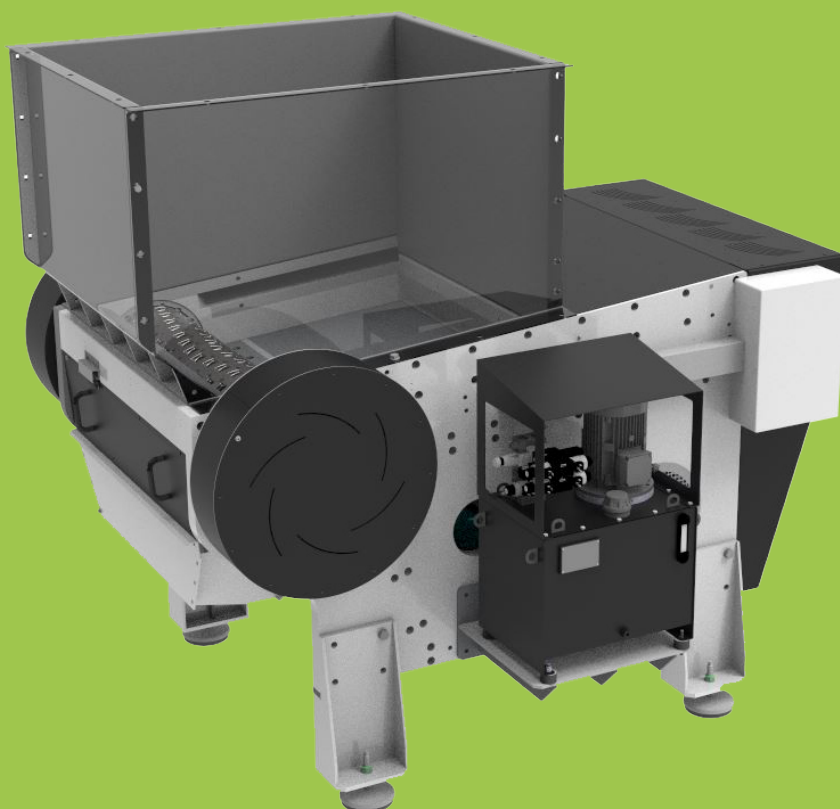


WELCOME IN WRS

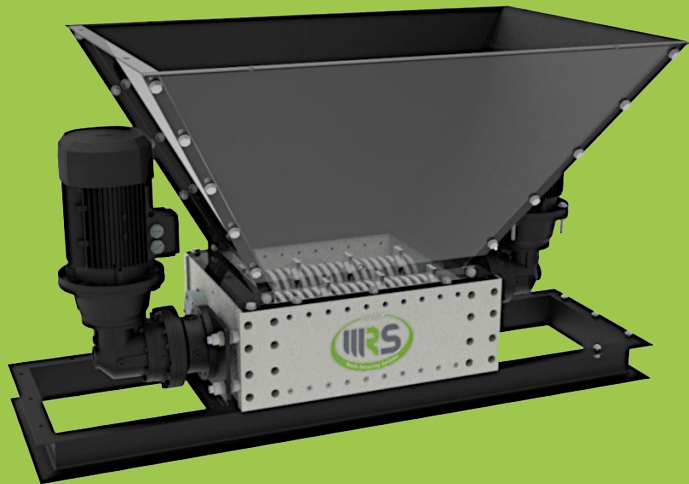




MACHINES WITH OUTPUT SIZE CONTROL



SINGLE-SHAFT SHREDDER - TM3711E



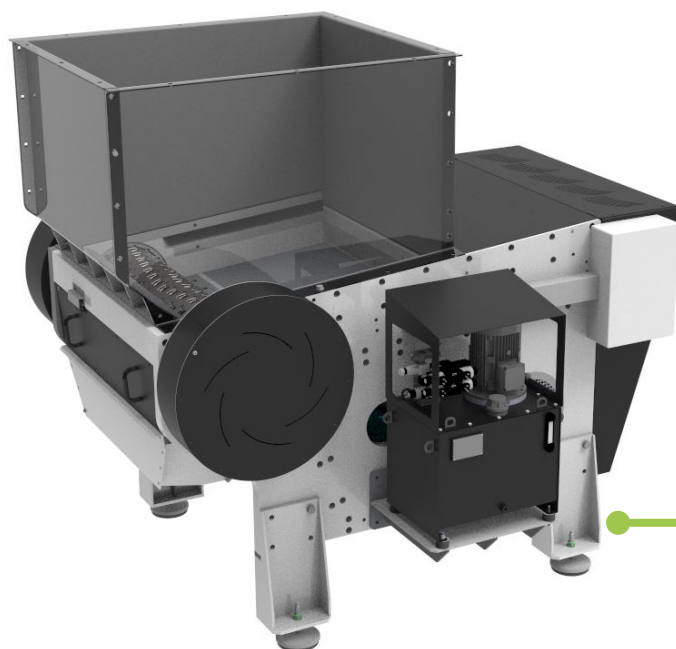
DOUBLE-SHAFT SHREDDER - SE15E2



DOUBLE-SHAFT SHREDDER - SE30E2

SINGLE-SHAFT SHREDDER

TM3711E



ELECTRIC MACHINE





SINGLE-SHAFT

OUTPUT SIZE CONTROL



MODEL	POWER	WORKING SURFACE	MASS	ROTATION SPEED
1000	45 kW	800x1060 mm	5000 kg	80-140 rpm

AVAILABLE INSERTS

			
1-cut profile insert	2-cut profile insert	3-cut profile insert	4-cut profile insert

TECHNICAL SPECIFICATIONS

TM3711E



Grid with holes from 8 mm to 70 mm

SHREDDING BODY

In steel complete with 1 rotor Ø 370mm

- Drive transmission system through toothed belt
- Flywheel to stabilize speed peaks
- Colours grey RAL 7024 and RAL 7035

ELECTRIC COMPONENTS

- Safety self-controlling module for safety devices supervision
- Electric motor 45 kW - 400V/50Hz (protection degree IP55 and insulation class F)
- Multifunction PLC
- Automatic device for ram-feeder slowdown according to electrical absorption
- Electric control board (protection degree IP55)

STANDARD HOPPER

Loading hopper in steel plate thickness 5 mm.

HOPPER DIMENSIONS	L	P	H	VOLUME
1000	1330 mm	1080 mm	850 mm	1,2 m ³

OPTIONAL

- Industry 4.0 Smartbox One module
- Height adjustable shock absorbers
- Hopper with bulkheads moved by hydraulic cylinders
- Customizable colours

WRS ADVANTAGES

- Shredding body structure in carbon steel with section 60mm
- Structural components equipped with dowel pins to facilitate disassembly and re-assembly operations
- Grid moved by hydraulic cylinders
- Ram-feeder positioning sensor
- Different inserts (profile and kind of steel) according to the material to be processed
- Easy replacement of inserts
- Safety replacement of self-centerable counterblades

DOUBLE-SHAFT SHREDDER

SE15E2



ELECTRIC MACHINE

DOUBLE-SHAFT



OUTPUT SIZE CONTROL

2 GEARMOTORS



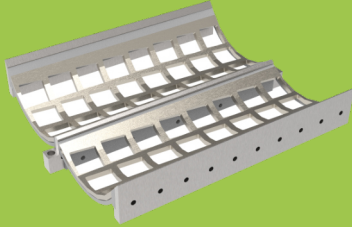
MODEL	POWER	WORKING SURFACE	MASS	ROTATION SPEED
600	11 kW	542x600 mm	1515 kg	10-30 rpm
900	11 kW	542x900 mm	1830 kg	10-30 rpm
1250	11 kW	542x1250 mm	2180 kg	10-30 rpm

AVAILABLE BLADES

			
Blade with thickness from 10 to 30mm 1 hook	Blade with thickness from 10 to 30mm 3+1 hooks	Blade with thickness from 10 to 30mm 14 hooks	Blade with thickness from 10 to 30mm 2 hooks

TECHNICAL SPECIFICATIONS

SE15E2



Grid with holes from 17 mm to 60 mm

SHREDDING BODY

In steel complete with 2 hexagonal shafts counter-rotating at different speed

- Connecting frame in welded C-section steel bar
- Right-angle or in-line planetary gearbox
- Colours grey RAL 7024 and RAL 7035

ELECTRIC COMPONENTS

- Safety self-controlling module for safety devices supervision
- 2 electric motors from 2,2 to 7,5 kW - 400V/50Hz (protection degree IP55 and insulation class F)
- Electric control board (protection degree IP55)
- Multifunction PLC
- Automatic reversal device in case of overloading
- Programming of number of inversions

STANDARD HOPPER

Loading hopper in steel plate thickness 4 mm.

HOPPER DIMENSIONS	L	P	H	VOLUME
600	1415 mm	985 mm	750 mm	0,6 m ³
900	1715 mm	985 mm	750 mm	0,7 m ³
1250	2045 mm	985 mm	750 mm	0,9 m ³

OPTIONAL

- Industry 4.0 Smartbox One module
- Customizable loading hopper
- Hydraulic ram-feeder
- Customizable support
- Easy removal of scrapers
- Customizable colours

WRS ADVANTAGES

- Blades range with different profiles and kind of steel according to the material to be processed
- Shredding body structure (composed of 2 front flanges e 2 sides) in carbon steel with section 60mm
- Structural components equipped with dowel pins to facilitate disassembly and re-assembly operations
- Easy removal of the grid
- Scraper hooked to the sides through sliding guides
- Anti-breaking system for shafts and bearings
- Blades axial adjustment
- Easy replacement of blades

DOUBLE-SHAFT SHREDDER

SE30E2



ELECTRIC MACHINE

DOUBLE-SHAFT

OUTPUT SIZE CONTROL

2 GEARMOTORS

**SPECIAL
WASTE**

PAPER

PLASTIC

**ORGANIC
WASTE**

WOOD

GLASS

WEEE

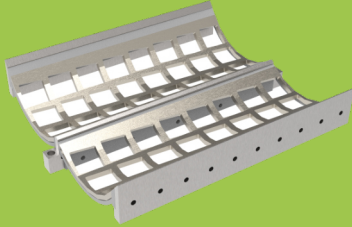
MODEL	POWER	WORKING SURFACE	MASS	ROTATION SPEED
850	22 kW	760x800 mm	3630 kg	10-30 rpm
1050	22 kW	760x1000 mm	4020 kg	10-30 rpm
1300	22 kW	760x1300 mm	4500 kg	10-30 rpm

AVAILABLE BLADES

			
Blade with thickness from 10 to 30mm 1 hook	Blade with thickness from 10 to 30mm 3+1 hooks	Blade with thickness from 10 to 30mm 14 hooks	Blade with thickness from 10 to 30mm 2 hooks

TECHNICAL SPECIFICATIONS

SE30E2



Grid with holes from 17 mm to 60 mm

SHREDDING BODY

In steel complete with 2 hexagonal shafts counter-rotating at different speed

- Connecting frame in welded C-section steel bar
- Right-angle or in-line planetary gearbox
- Colours grey RAL 7024 and RAL 7035

ELECTRIC COMPONENTS

- Safety self-controlling module for safety devices supervision
- 2 electric motors from 5,5 to 22,5 kW - 400V/50Hz (protection degree IP55 and insulation class F)
- Electric control board (protection degree IP55)
- Multifunction PLC
- Automatic reversal device in case of overloading
- Programming of number of inversions

STANDARD HOPPER

Loading hopper in steel plate thickness 4 mm.

HOPPER DIMENSIONS	L	P	H	VOLUME
600	1415 mm	985 mm	750 mm	0,6 m ³
900	1715 mm	985 mm	750 mm	0,7 m ³
1250	2045 mm	985 mm	750 mm	0,9 m ³

OPTIONAL

- Industry 4.0 Smartbox One module
- Customizable loading hopper
- Hydraulic ram-feeder
- Customizable support
- Easy removal of scrapers
- Customizable colours

WRS ADVANTAGES

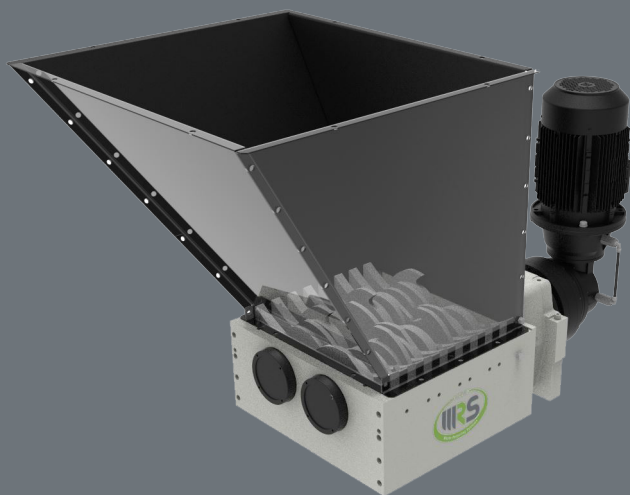
- Blades range with different profiles and kind of steel according to the material to be processed
- Shredding body structure (composed of 2 front flanges e 2 sides) in carbon steel with section 60mm
- Structural components equipped with dowel pins to facilitate disassembly and re-assembly operations
- Easy removal of the grid
- Scraper hooked to the sides through sliding guides
- Anti-breaking system for shafts and bearings
- Blades axial adjustment
- Easy replacement of blades



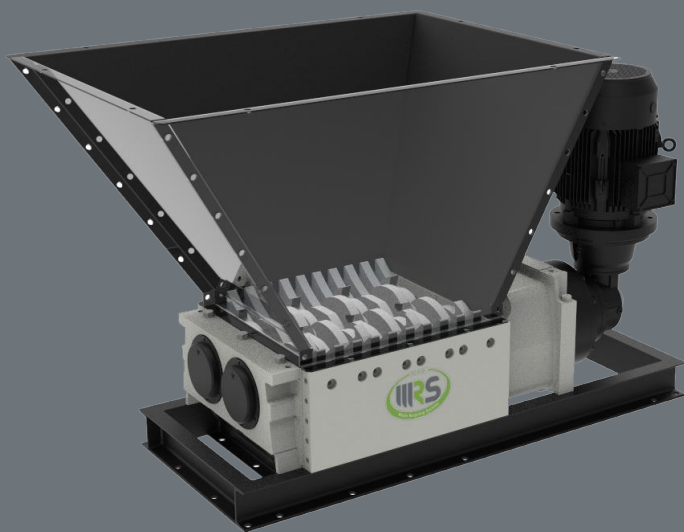
ELECTRIC MACHINES



DOUBLE-SHAFT SHREDDER - SE04



DOUBLE-SHAFT SHREDDER - SE10



DOUBLE-SHAFT SHREDDER - SE15



DOUBLE-SHAFT SHREDDER - SE30

DOUBLE-SHAFT SHREDDER

SE4



ELECTRIC MACHINE

DOUBLE-SHAFT



MODEL	POWER	WORKING SURFACE	MASS	ROTATION SPEED
220	3 kW	500x216 mm	254 kg	20,7x13,8 rpm

AVAILABLE BLADES



Blade with thickness
13,5 mm 1 hook



Blade with thickness
13,5 mm 4+1 hooks

TECHNICAL SPECIFICATIONS

SE4

SHREDDING BODY

In steel complete with 2 hexagonal shafts counter-rotating at different speed

- Connecting frame in welded C-section steel bar
- Right-angle or in-line planetary gearbox
- Colours gray RAL 7024 and RAL 7035

ELECTRIC COMPONENTS

- Safety self-controlling module for safety devices supervision
- Electric motor 3 kW - 400V/50hz (protection degree IP55 and insulation class F)
- Electric control board (protection degree IP55)

STANDARD HOPPER

Loading hopper in steel plate thickness 1.5 mm.

HOPPER DIMENSIONS	L	P	H	VOLUME
220	220 mm	510 mm	830 mm	0,1 m ³

OPTIONAL

- Multifunction PLC
- Automatic reversal device in case of overloading
- Programming of number of inversions
- Electric motor 4,6 kW - 400V/50Hz (protection degree IP55 and insulation class F)
- Customizable loading hopper
- Customizable support
- Customizable colours

WRS ADVANTAGES

- Blades range with different profiles and steel types according to the material to be processed
- Shredding body structure (composed of 2 front flanges e 2 sides) in carbon steel with section 90mm
- Structural components equipped with dowel pins to facilitate disassembly and re-assembly operations

DOUBLE-SHAFT SHREDDER

SE10



ELECTRIC MACHINE

DOUBLE-SHAFT



MODEL	POWER	WORKING SURFACE	MASS	ROTATION SPEED
360	7,5 kW	532x360 mm	820 kg	17,3x8,8 rpm
480	7,5 kW	532x480 mm	930 kg	17,3x8,8 rpm

AVAILABLE BLADES

Blade with thickness 15mm 1 hook	Blade with thickness 15mm 3+1 hooks	Blade with thickness 15mm 14 hooks

TECHNICAL SPECIFICATIONS

SE10

SHREDDING BODY

In steel complete with 2 hexagonal shafts counter-rotating at different speed

- Connecting frame in welded C-section steel bar
- Right-angle or in-line planetary gearbox
- Colours gray RAL 7024 and RAL 7035

ELECTRIC COMPONENTS

- Safety self-controlling module for safety devices supervision
- Electric motor 7,5 kW - 400V/50Hz (protection degree IP55 and insulation class F)
- Electric control board (protection degree IP55)
- Multifunction PLC
- Automatic reversal device in case of overloading
- Programming of number of inversions

STANDARD HOPPER

Loading hopper in steel plate thickness 4 mm.

HOPPER DIMENSIONS	L	P	H	VOLUME
360	772 mm	980 mm	750 mm	0,3 m ³
480	892 mm	980 mm	750 mm	0,4 m ³

OPTIONAL

- Industry 4.0 Smartbox One module
- Customizable loading hopper
- Customizable support
- Easy removal of scrapers
- Customizable colours

WRS ADVANTAGES

- Blades range with different profiles and steel types according to the material to be processed
- Shredding body structure (composed of 2 front flanges e 2 sides) in carbon steel with section 60mm
- Structural components equipped with dowel pins to facilitate disassembly and re-assembly operations
- Scraper hooked to the sides through sliding guides

DOUBLE-SHAFT SHREDDER

SE15



ELECTRIC MACHINE

DOUBLE-SHAFT



MODEL	POWER	WORKING SURFACE	MASS	ROTATION SPEED
450	11 kW	532x450 mm	1360 kg	17.6-10.4 rpm
600	11 kW	532x600 mm	1515 kg	17.6-10.4 rpm
900	11 kW	532x900 mm	1830 kg	17.6-10.4 rpm
1250	11 kW	532x1250 mm	2180 kg	17.6-10.4 rpm

AVAILABLE BLADES

Blade with thickness 30mm 1 hook	Blade with thickness 30mm 3+1 hooks	Blade with thickness 30mm 14 hooks	Bulk blade

TECHNICAL SPECIFICATIONS

SE15

SHREDDING BODY

In steel complete with 2 hexagonal shafts counter-rotating at different speed

- Connecting frame in welded C-section steel bar
- Right-angle or in-line planetary gearbox
- Colours gray RAL 7024 and RAL 7035

ELECTRIC COMPONENTS

- Safety self-controlling module for safety devices supervision
- Electric motor 11 kW - 400V/50Hz (protection degree IP55 and insulation class F)
- Electric control board (protection degree IP55)
- Multifunction PLC
- Automatic reversal device in case of overloading
- Programming of number of inversions

STANDARD HOPPER

Loading hopper in steel plate thickness 4 mm.

HOPPER DIMENSIONS	L	P	H	VOLUME
450	1265 mm	985 mm	750 mm	0,5 m ³
600	1415 mm	985 mm	750 mm	0,6 m ³
900	1715 mm	985 mm	750 mm	0,7 m ³
1250	2045 mm	985 mm	750 mm	0,9 m ³

OPTIONAL

- Industry 4.0 Smartbox One module
- Customizable loading hopper
- Hydraulic ram feeder
- Customizable support
- Easy removal of scrapers
- Customizable colours

WRS ADVANTAGES

- Blades range with different profiles and steel types according to the material to be processed
- Shredding body structure (composed of 2 front flanges e 2 sides) in carbon steel with section 60mm
- Structural components equipped with dowel pins to facilitate disassembly and re-assembly operations
- Scraper hooked to the sides through sliding guides

DOUBLE-SHAFT SHREDDER

SE30






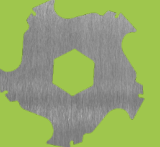
ELECTRIC MACHINE

DOUBLE-SHAFT



MODEL	POWER	WORKING SURFACE	MASS	ROTATION SPEED
650	22 kW	760x650 mm	3230 kg	17,9-9,5 rpm
850	22 kW	760x850 mm	3630 kg	17,9-9,5 rpm
1050	22 kW	760x1050 mm	4020 kg	17,9-9,5 rpm
1300	22 kW	760x1300 mm	4500 kg	17,9-9,5 rpm

AVAILABLE BLADES

			
Blade with thickness 30mm 1 hook	Blade with thickness 30mm 3+1 hooks	Blade with thickness 30mm 14 hooks	Bulk blade

TECHNICAL SPECIFICATIONS

SE30

SHREDDING BODY

In steel complete with 2 hexagonal shafts counter-rotating at different speed

- Connecting frame in welded C-section steel bar
- Right-angle or in-line planetary gearbox
- Colours gray RAL 7024 and RAL 7035

ELECTRIC COMPONENTS

- Safety self-controlling module for safety devices supervision
- Electric motor 22kW - 400V/50Hz (protection degree IP55 and insulation class F)
- Electric control board (protection degree IP55)
- Multifunction PLC
- Automatic reversal device in case of overloading
- Programming of number of inversions

STANDARD HOPPER

Loading hopper in steel plate thickness 5mm.

HOPPER DIMENSIONS	L	P	H	VOLUME
650	1530 mm	1665 mm	850 mm	1,0 m ³
850	1730 mm	1665 mm	850 mm	1,2 m ³
1050	1930 mm	1665 mm	850 mm	1,4 m ³
1300	2180 mm	1665 mm	850 mm	1,6 m ³

OPTIONAL

- Industry 4.0 Smartbox One module
- Customizable loading hopper
- Hydraulic ram feeder
- Customizable support
- Easy removal of scrapers
- Customizable colours

WRS ADVANTAGES

- Blades range with different profiles and steel types according to the material to be processed
- Shredding body structure (composed of 2 front flanges e 2 sides) in carbon steel with section 90mm
- Structural components equipped with dowel pins to facilitate disassembly and re-assembly operations
- Double mechanical seals with vent chamber
- Scraper hooked to the sides through sliding guides



HYDRAULIC MACHINES



HYDRAULIC CONTROL UNIT - SH50



DOUBLE-SHAFT SHREDDER - SH50



DOUBLE-SHAFT SHREDDER - SH100



HYDRAULIC CONTROL UNIT - SH100

DOUBLE-SHAFT SHREDDER

SH50



HYDRAULIC MACHINE

DOUBLE-SHAFT



MODEL	POWER	WORKING SURFACE	MASS	ROTATION SPEED
650	37 kW	760x650 mm	3200 kg	15-8 rpm
850	37 kW	760x850 mm	3640 kg	15-8 rpm
1050	37 kW	760x1050 mm	4030 kg	15-8 rpm
1300	37 kW	760x1300 mm	4515 kg	15-8 rpm

AVAILABLE BLADES

Blade with thickness 50mm 1 hook	Blade with thickness 50mm 3+1 hooks	Blade with thickness 50mm 14 hooks	Bulk blade

TECHNICAL SPECIFICATIONS

SH50

SHREDDING BODY

In steel complete with 2 hexagonal shafts counter-rotating at different speed

- Connecting frame in welded C-section steel bar
- Right-angle or in-line planetary gearbox
- Colours gray RAL 7024 and RAL 7035

ELECTRIC COMPONENTS

- Safety self-controlling module for safety devices supervision
- Electric motor 37 kW - 400V/50Hz (protection degree IP55 and insulation class F)
- Electric control board (protection degree IP55)
- Multifunction PLC
- Automatic reversal device in case of overloading
- Programming of number of inversions

STANDARD HOPPER

Loading hopper in steel plate thickness 5mm.

HOPPER DIMENSIONS	L	P	H	VOLUME
650	1530 mm	1665 mm	850 mm	1,0 m ³
850	1730 mm	1665 mm	850 mm	1,2 m ³
1050	1930 mm	1665 mm	850 mm	1,4 m ³
1300	2180 mm	1665 mm	850 mm	1,6 m ³

HYDRAULIC CONTROL UNIT



Heat exchanger	0,55 kW
Oil tank capacity	160 L
Hydraulic pipes standard length	2500 mm
Mass	750 kg

OPTIONAL

- Industry 4.0 Smartbox One module
- Customizable loading hopper
- Hydraulic ram-feeder
- Customizable support
- Easy removal of scrapers
- Customizable colours

WRS ADVANTAGES

- Blades range with different profiles and kind of steel according to the material to be processed
- Shredding body structure (composed of 2 front flanges e 2 sides) in carbon steel with section 90mm
- Structural components equipped with dowel pins to facilitate disassembly and re-assembly operations
- Double mechanical seals with vent chamber
- Scraper hooked to the sides through sliding guides

DOUBLE-SHAFT SHREDDER

SH100



HYDRAULIC MACHINE

DOUBLE-SHAFT

INDUSTRIAL
WASTE

BULKY
MATERIAL

TYRES

METALS




SPECIAL
WASTE

WEEE

MSW

MODEL	POWER	WORKING SURFACE	MASS	ROTATION SPEED
1300	75 kW	965x1300 mm	9000 kg	14-8.6 rpm
1500	75 kW	965x1500 mm	9680 kg	14-8.6 rpm
1900	75 kW	965x1900 mm	11.280kg	14-8.6 rpm
2450	75 kW	965x2450 mm	13.500kg	14-8.6 rpm

AVAILABLE BLADES

		
Blade with thickness 75mm 1 hook	Blade with thickness 75mm 3+1 hooks	Blade with thickness 50mm a 7 hooks

TECHNICAL SPECIFICATIONS

SH100

SHREDDING BODY

In steel complete with 2 hexagonal shafts counter-rotating at different speed

- Connecting frame in welded C-section steel bar
- Right-angle or in-line planetary gearbox
- Colours gray RAL 7024 and RAL 7035

ELECTRIC COMPONENTS

- Safety self-controlling module for safety devices supervision
- Electric motor 75 kW - 400V/50Hz (protection degree IP55 and insulation class F)
- Electric control board (protection degree IP55)
- Multifunction PLC
- Automatic reversal device in case of overloading
- Programming of number of inversions

STANDARD HOPPER

Loading hopper in steel plate thickness 10mm.

HOPPER DIMENSIONS	L	P	H	VOLUME
1300	2280 mm	1945 mm	1050 mm	2,5 m ³
1500	2480 mm	1945 mm	1050 mm	2,8 m ³
1900	2880 mm	1945 mm	1050 mm	3,1 m ³
2450	3430 mm	1945 mm	1050 mm	4,1 m ³

HYDRAULIC CONTROL UNIT



Heat exchanger	1,1 kW
Oil tank capacity	300 L
Hydraulic pipes standard length	4000 mm
Mass	1200 kg

OPTIONAL

- Industry 4.0 Smartbox One module
- Customizable loading hopper
- Hydraulic ram-feeder
- Customizable support
- Easy removal of scrapers
- Customizable colours

WRS ADVANTAGES

- Blades range with different profiles and kind of steel according to the material to be processed
- Shredding body structure (composed of 2 front flanges e 2 sides) in carbon steel with section 90mm
- Structural components equipped with dowel pins to facilitate disassembly and re-assembly operations
- Double mechanical seals with vent chamber
- Scraper hooked to the sides through sliding guides



WRS ITALIA SRL

Via Campania 40/42 - Motta di Livenza (TV) - Italia

Tel: +39 0422 766341

Fax +39 0422 764793

info@steelwrs.it

www.wrsitalia.com